

Introducing.....

Bus Shelters



We have done extensive research to develop a Bus Shelter design to accommodate the needs of all areas within Councils, Shires and Cities. These areas all require different levels of product design to combat vandalism and harsh weather conditions.

We now produce a Bus Shelter with components that reduce maintenance and installation costs, along with being environmentally friendly. The panelling systems are all constructed with modern, high quality, high strength materials that are also low maintenance.

Our Frames and panels are constructed using Anodised Aluminium Extrusions and Sheeting along with Glass that is all produced to Australian Standards. (Extrusions: AS1886 Anodising: AS 1231 Glass: AS 2080)

The roof of the shelters are Blueorb Colourbond Steel, with 3 different styles available (Curved, Skillion and Pitched). The roof sheets are available in the standard Dulux colour range.

All of the fixings used for both assembly and installation are Stainless Steel.

All of the panels are inserted into an Anodised Aluminium frame which attaches to the shelter. Each shelter has individual panels allowing easy removal (drilling out of pop rivets) if damage/vandalism to a single panel occurs. If the problem is recurring, this design allows for the panel/s to be changed to a more durable material.

Thanks to new Glass Printing Technologies we are now able to offer Council/Company Logos to be Etched into the Glass Panels* upon request.

Panel options available include:

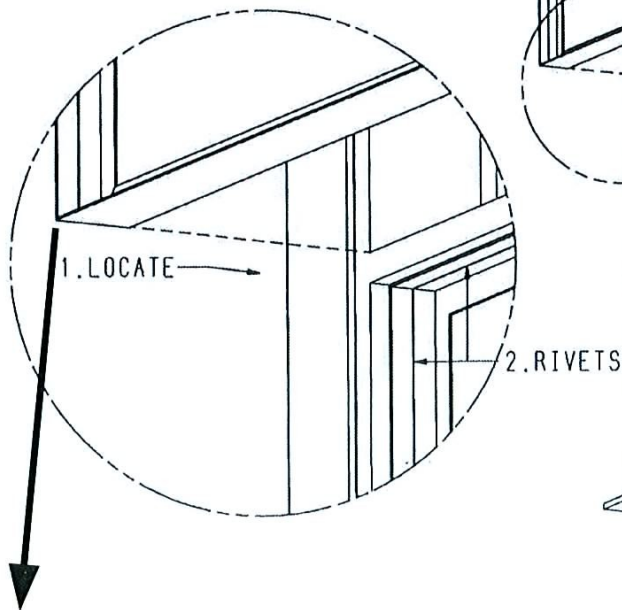
- ◆ 3mm Perforated Anodised Aluminium Sheet
- ◆ 4mm Solid Anodised Aluminium Sheet
- ◆ 6mm Toughened Glass * – Clear
- ◆ 6mm Painted Glass * (Colourlite) – Toughened

Bus Shelter - Retrofit Panels

Example of Glass Etching Available upon request

Each panel on the Bus Shelter can be easily removed for replacement

Replacement is done by drilling out pop rivets – remove old panel - re fit new panels – then drill and rivet back into position.



All glass panels are cased in an anodised aluminium frame – this leaves no bare glass edges.

